

T D M
આરંભ

નવીન ઉમેદ નવીન સુરુવાત





TDM
आरंभ

*Architectural rendition

TDM DEVELOPERS LLP

TDM is a group of qualified Architects & Project managers who have experience of more than a decade. Inherent efficiencies naturally accrue when the designers of your project become the construction managers. This transition allows the project to continue without any loss of information or design intent. We take budgets seriously and our contracting experience gives us the ability to take designs in realistic directions. Excellence in both design and construction is achieved when the two come together and are seamlessly integrated under one roof. At TDM, we are passionate about all stages of project. Each detail is a reflection of who we are and what we do.

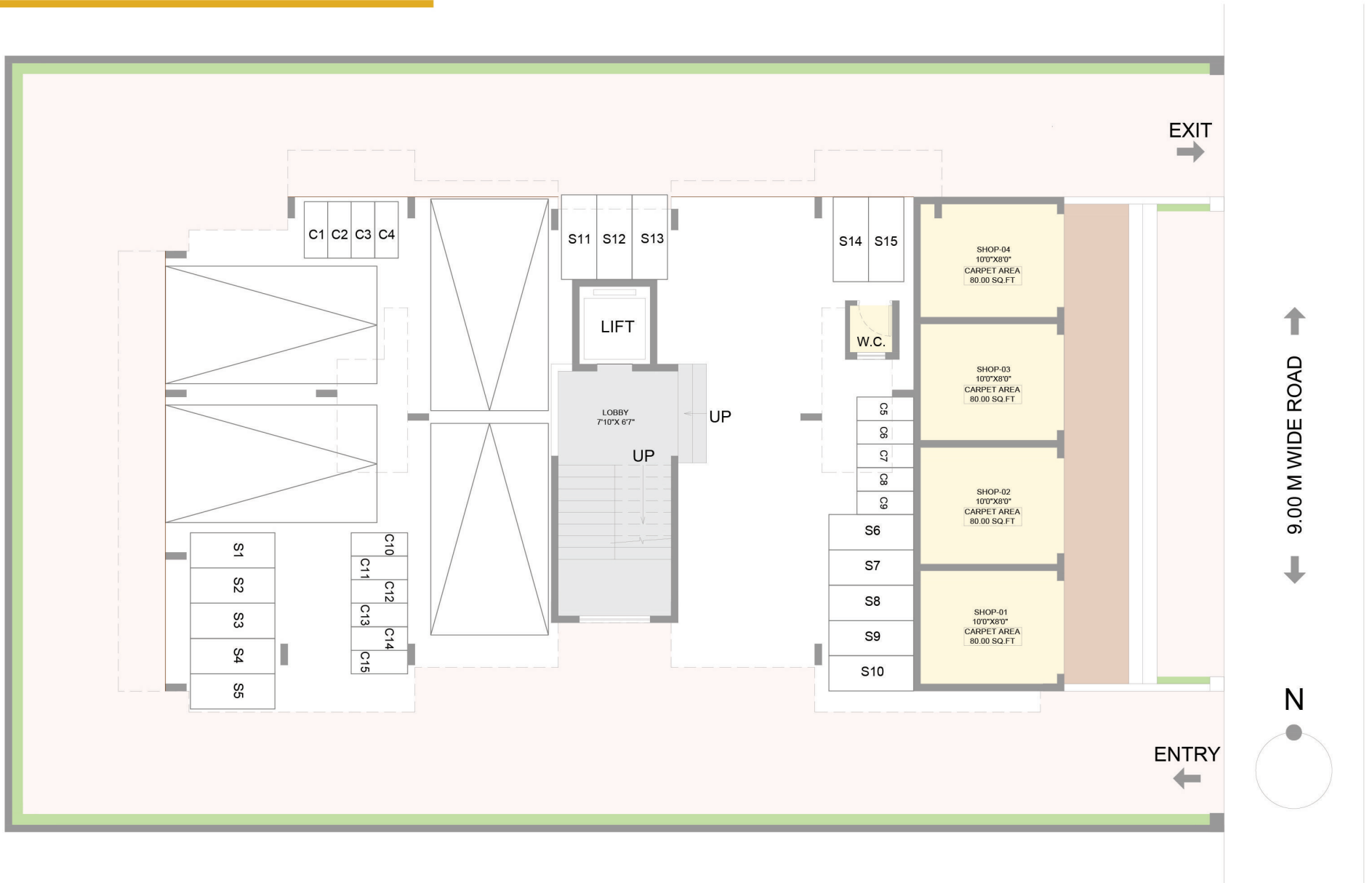
1 BHK



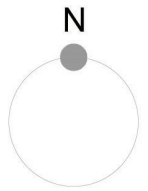
2 BHK



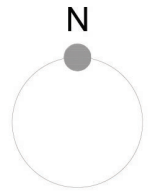
Ground Floor Plan



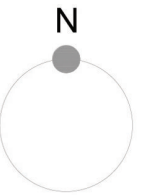
First Floor Plan



2nd Floor Plan



3rd Floor Plan





SPECIFICATIONS

LIVING & BEDROOM

- Entrance door with superior Laminate finish & advance locking system.
- Premier Quality Vitrified tiles for flooring & skirting.
- Powder coated/anodised aluminium sliding windows with mosquito mesh.

BATHROOM & TOILET

- Matt finish, anti skid tiles in flooring.
- Designer tiles dado up to full height.
- Branded C.P fittings & sanitary wares.
- Provision of Geysers.

KITCHEN

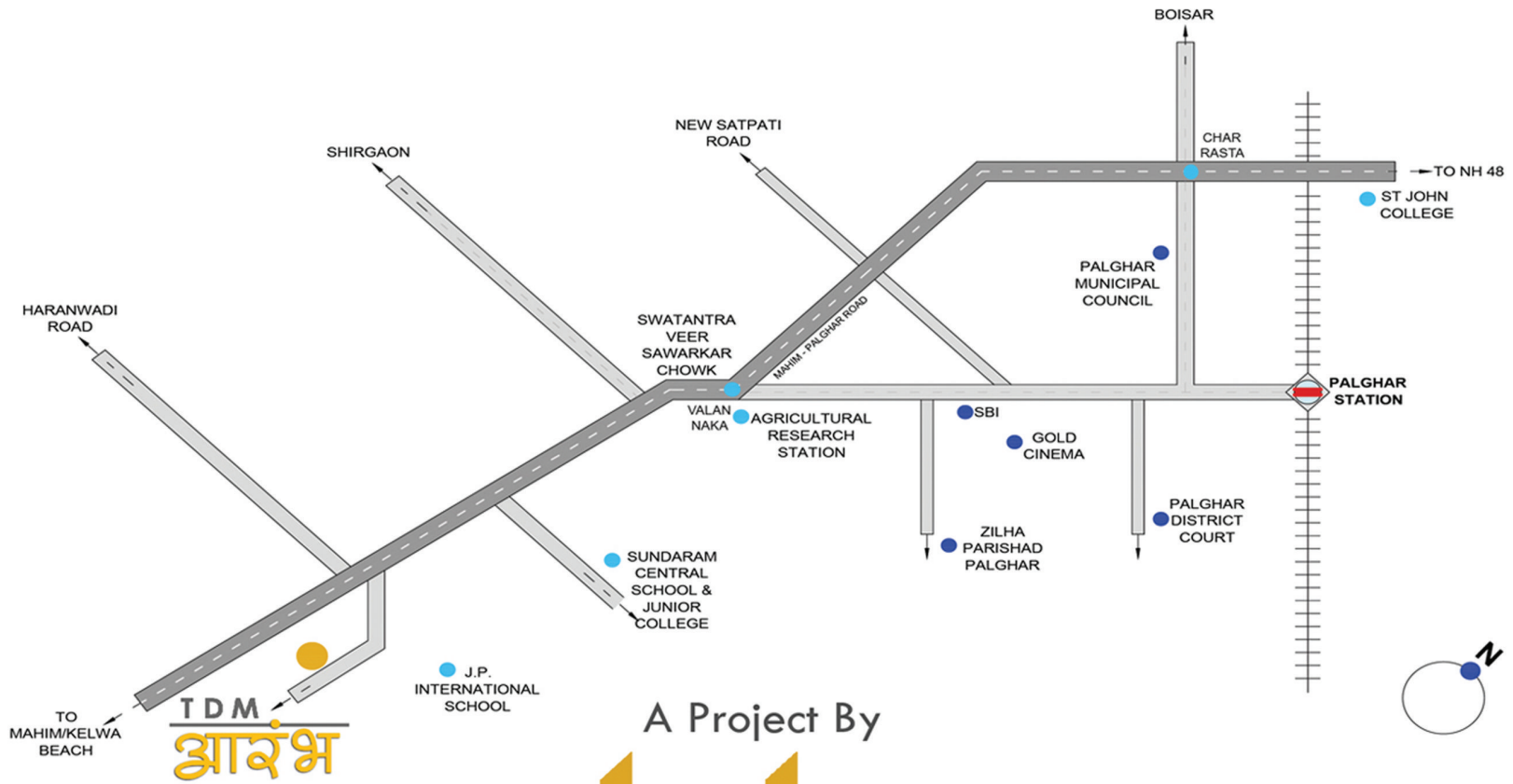
- Granite kitchen platform with stainless steel sink.
- Modular kitchen with stainless steel trolley.
- Water purifier outlet point with electrical switch/socket.

ELECTRICAL & PLUMBING

- Concealed premier quality copper wiring with modular switches.
- Inverter plugs in each flat.
- AC point in Living & Bedroom.
- Safety features like MCB & ELCB of premier quality.
- TV point in living & bedroom.

SALIENT FEATURES

- Aesthetically designed building elevation.
- Provision of Lofts above toilets.
- Branded Lift in building.
- Elegant main entrance lobby.
- Walls finished with gypsum coating & premier paint.
- Paved car parking.



A Project By



DEVELOPERS LLP
www.tdmdevelopers.com

MahaRERA NO - P99000025157
<http://maharera.mahaonline.gov.in>



PRADHAN MANTRI
AWAS YOJANA

Site Office:

Shop no.04 & 05, 1st Floor,
Rajeshwari shopping Center,
Hutatma Chowk, Palghar - 401404.
Ph. No. +91 8806 060 026

Registered Office:

A-704 Nalanda CHS,
Jayraj Nagar, Borivali (west),
Mumbai - 400092.
Ph.No: +91 9769 356 883

Branch Office:

1- Rachana park Apts.
Atreya Society, Off. Vetal Chowk,
S.B. Road, Pune - 411016
Ph.No: +91 9595 979 735

Note: The contents of this brochure do not form a part of the sale document. Developer reserves the right to amend, delete or alter any details or amenities /specifications of the project without notice to the prospective purchaser.

Site Address : Survey No 380/27, Near J P International School, haranwadi stop . Mahim Palghar Road, Village Mahim,Palghar (W) Pin: 401404.